

# DUCKIL TEXTILE

SHOE COMPONENTS COLLECTION

FW27

# GLOBAL DUCKIL



## DUCKIL TEXTILE CO.,LTD | HEAD OFFICE

207-9, Singman-ro, Gangseo-gu, Busan, 46707 Korea  
 TEL \_ (82) 51-941-0360  
 Contact info\_ Johnny Jung | johnny@duckilltd.co.kr  
 Lonnie Lee | ldh@duckilltd.co.kr

## DUCKIL TEXTILE VINA CO.,LTD

Lo B8, KCN Minh Hung-Han Quoc, Ap 3A Xa Minh Hung,  
 Huyen Chon Tanh, Binh Phuoc, Vietnam  
 TEL \_ (84) 651-3645-222  
 Contact info\_ Changwoo Shin | cwshin@duckilltd.co.kr

## DUCKIL TEXTILE KOREA INDONESIA

Jl. Prof Dr. Ir. Soetami KM 07, Kel. Namong Kec  
 Rangkasbitung Kab. Lebak, Prov Banten Indonesia  
 TEL \_ 0252 555 7972  
 Contact info\_ Jihoon Kim | jh.kim@duckilltd.co.kr



www.duckilltd.co.kr

# DUCKIL FW27

## SHOE COMPONENTS COLLECTION

# CONTENTS

Reflective Lenticular Webbing	01
Glitter Patch	03
Our Silicone & PU printing	05
Silicone Reflective Transfer Webbing	07
Woven Labels	09
Eyestay Webbing	11
Recycled Polyester Webbing	13
Advanced Construction Webbing	15
Specialty Weave Webbing	17
Classic Essential Laces	19
Metallic & Textured Laces	21
Patterned & Graphic Laces	23
Textured Fashion Laces	25
Braided Vintage Laces	27
Essential & Glossy Laces	29
Gradient Pattern Laces & Webbing tape	31

# Reflective Lenticular Webbing

This innovative webbing features a high-visibility reflective film on a woven base. Using precise laser engraving, it creates a dynamic “motion” effect. Logos or patterns shift depending on the viewing angle—left to right or up and down—creating a unique and eye-catching look.

NO	Material No.	Price	UNIT	Composition	Width (mm)
1	DI-27201		PIECE	95% Recycled Polyester, 5% Reflective film	110X38
2	DI-27202		PIECE	10% Recycled Polyester, 80% Monofilament (Polyester), 5% Reflective yarn, 5% Reflective film	110X32
3	DI-27203		PIECE	5% Recycled Polyester, 90% Polyester Mono, 5% Reflective film	110X16
4	DI-27204		PIECE	95% Recycled Polyester, 5% Reflective film	110X16
5	DI-27205		PIECE	95% Recycled Polyester, 5% Reflective film	110X12
6	DI-27206		PIECE	95% Recycled Polyester, 5% Reflective film	110X12

DI-27201 ▶



DI-27202 ▶



DI-27203 ▶



DI-27204 ▶



DI-27205 ▶



DI-27206 ▶



# Glitter Patch

Our glitter logo patch features a premium glitter surface with sharp logo details for strong visual impact. It is lightweight, durable, and suitable for footwear, apparel, bags, and sports products. Custom shapes, colors, sizes, and backing options (heat transfer or sew-on) are available.

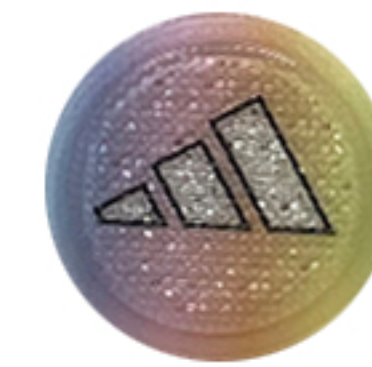
NO	Material No.	Price	UNIT	Composition	Width (mm)
1	DI-27207		PIECE	95% TPU, 5% Hotmelt film	30X30
2	DI-27208		PIECE	95% TPU, 5% Hotmelt film	30X30
3	DI-27209		PIECE	95% TPU, 5% Hotmelt film	30X30
4	DI-27210		PIECE	95% TPU, 5% Hotmelt film	76X26



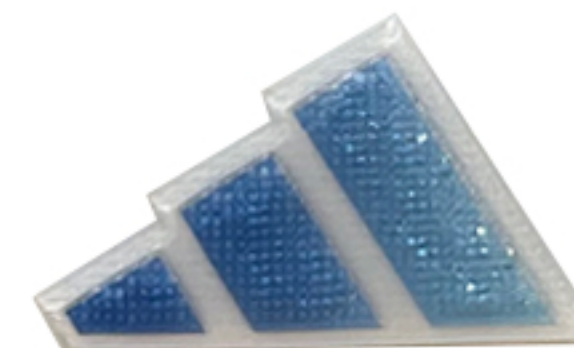
DI-27207



DI-27208



DI-27209



DI-27210

# Our Silicone & PU printing

Our Silicone & PU printing process adds texture and durability to your brand image. It enhances webbing and labels while giving your product a premium and long-lasting finish.

NO	Material No.	Price	UNIT	Composition	Width (mm)
1	DI-27211		PIECE	10% Recycled Polyester, 80% Monofilament (Polyester), 5% Reflective yarn, 5% Silicone	33X50
2	DI-27212		PIECE	10% Recycled Polyester, 80% Monofilament (Polyester), 5% Reflective yarn, 5% PU	33X50
3	DI-27213		PIECE	5% Recycled Polyester, 90% Monofilament (Polyester), 5% Silicone	90X14
4	DI-27214		PIECE	75% Recycled Polyester, 20% Monofilament (Polyester), 5% Silicone	90X16
5	DI-27215		PIECE	75% Recycled Polyester, 20% Monofilament (Polyester), 5% Silicone	90X16
6	DI-27216		PIECE	95% Recycled Polyester, 5% Silicone	17X50
7	DI-27217		M x PR	95% Recycled Polyester, 5% Silicone	6
8	DI-27218		M	76% Nylon, 19% Spandex, 5% Silicone	16
9	DI-27219		PIECE	66% Recycled Polyester, 24% Spandex, 10% Silicone	160X31

## Our Silicone & PU printing



DI-27211

DI-27212

DI-27213



DI-27214



DI-27215



DI-27216



DI-27217



DI-27218



DI-27219



# Silicone Reflective Transfer Webbing

Silicone printing combined with reflective elements enhances visibility while adding a soft, rubber-like texture. It delivers both functional performance and a premium finish.

NO	Material No.	Price	UNIT	Composition	Width (mm)
1	DI-27220		PIECE	95% Recycled Polyester, 5% Reflective Silicone	120X14
2	DI-27221		PIECE	95% Recycled Polyester, 5% GID Silicone	120X14
3	DI-27222		PIECE	95% Recycled Polyester, 5% GID Reflective Silicone	120X14
4	DI-27223		PIECE	95% Recycled Polyester, 5% Chameleon Reflective Silicone	120X14
5	DI-27224		PIECE	95% Recycled Polyester, 5% Aurora Reflective	120X12
6	DI-27225		PIECE	95% Recycled Polyester, 5% Aurora Reflective	120X12
7	DI-27226		PIECE	95% Recycled Polyester, 5% Aurora Reflective	120X12
8	DI-27227		PIECE	95% Recycled Polyester, 5% Aurora Reflective	120X12
9	DI-27228		PIECE	100% Aurora Reflective Heat Transfer Sheet	28X5
10	DI-27229		PIECE	100% Aurora Reflective Heat Transfer Sheet	43X10



# Woven Labels

We offer a wide range of options for custom brand labels. Choose from recycled polyester, metallic, reflective, or solid-color yarns. Extra finishes like merrow edges add more color and refined details.

NO	Material No.	Price	UNIT	Composition	Width (mm)
1	DI-27230		PIECE	30% Recycled Polyester, 70% Non-woven	32X40
2	DI-27231		PIECE	30% Recycled Polyester, 70% Non-woven	45X18
3	DI-27232		PIECE	30% Recycled Polyester, 70% Non-woven	23X50
4	DI-27233		PIECE	100% Recycled Polyester	140X15
5	DI-27234		PIECE	100% Recycled Polyester	140X15
6	DI-27235		PIECE	100% Recycled Polyester	55X40
7	DI-27236		PIECE	100% Recycled Polyester	45X20
8	DI-27237		PIECE	100% Recycled Polyester	45X20
9	DI-27238		PIECE	100% Recycled Polyester	45X20
10	DI-27239		PIECE	100% Recycled Polyester	14X82

## Woven Labels



DI-27230



DI-27231



DI-27232

DI-27233



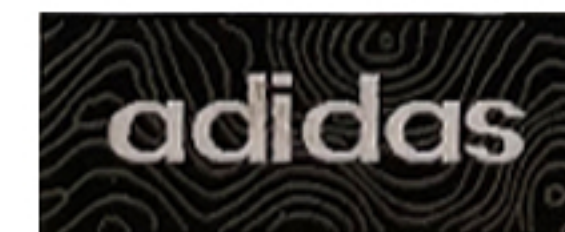
DI-27234



DI-27235



DI-27236



DI-27237



DI-27238



DI-27239

# Eyestay Webbing

Corded eyestay webbing is a modern and efficient way to secure shoelaces. It can be made in simple or complex designs with multiple cords, color combinations, and special yarn effects such as iridescent or multi-color variations in a single cord.

NO	Material No.	Price	UNIT	Composition	Width (mm)
1	DI-27240		M	100% Recycled Polyester	7
2	DI-27241		M	100% Recycled Polyester	8
3	DI-27242		M	100% Recycled Polyester	7
4	DI-27243		M	100% Recycled Polyester	7
5	DI-27244		M	100% Recycled Polyester	7
6	DI-27245		M	98% Recycled Polyester, 2% Reflective yarn	7
7	DI-27246		M	100% Recycled Polyester	6
8	DI-27247		M	100% Recycled Polyester	8

DI-27240



DI-27241



DI-27242



DI-27243



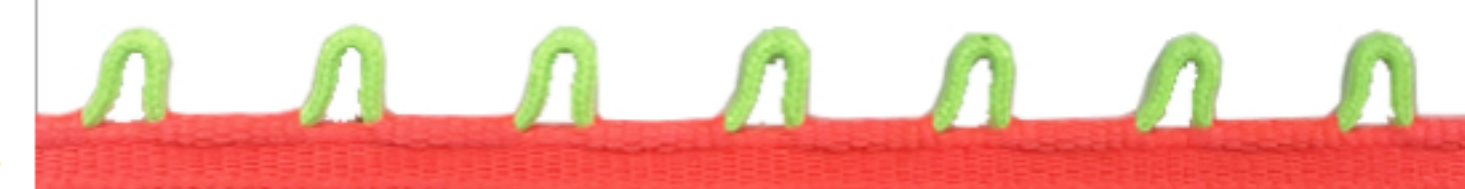
DI-27244



DI-27245



DI-27246



DI-27247



# Recycled Polyester Webbing

It can be simple, like a solid color, or more advanced with monofilament yarns, iridescent effects, reflective details, and flat or raised textures. A versatile webbing solution to add character and depth to your product.

NO	Material No.	Price	UNIT	Composition	Width (mm)
1	DI-27248		M	30% Recycled Polyester, 70% Monofilament (Polyester)	8
2	DI-27249		M	30% Recycled Polyester, 70% Monofilament (Polyester)	14
3	DI-27250		M	10% Recycled Polyester, 60% Monofilament (Polyester), 30% Radiant yarn	14
4	DI-27251		M	32% Recycled Polyester, 68% Monofilament (Polyester)	15
5	DI-27252		M	32% Recycled Polyester, 68% Monofilament (Polyester)	15
6	DI-27253		M	40% Recycled Polyester, 58% Monofilament (Polyester), 2% Reflective yarn	15
7	DI-27254		M	30% Monofilament (Polyester), 50% Metallic yarn, 20% Radiant yarn	18
8	DI-27255		M	20% Recycled Polyester, 40% Monofilament (Polyester), 40% Metallic yarn	18

DI-27248



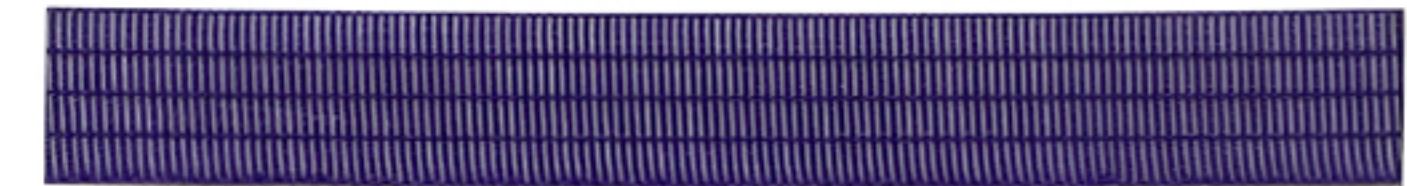
DI-27249



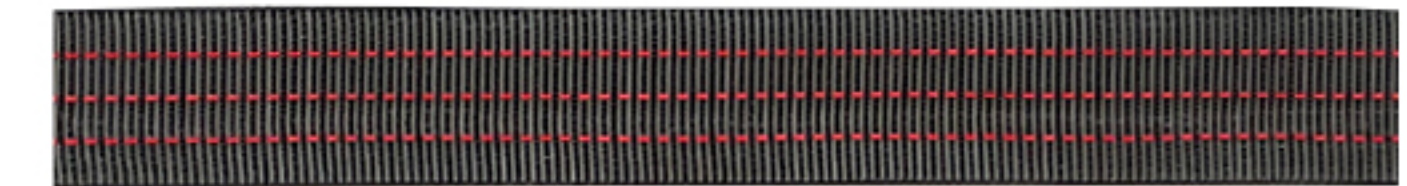
DI-27250



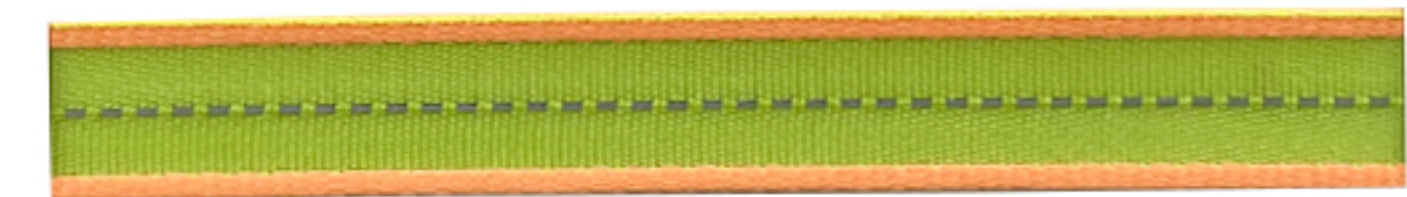
DI-27251



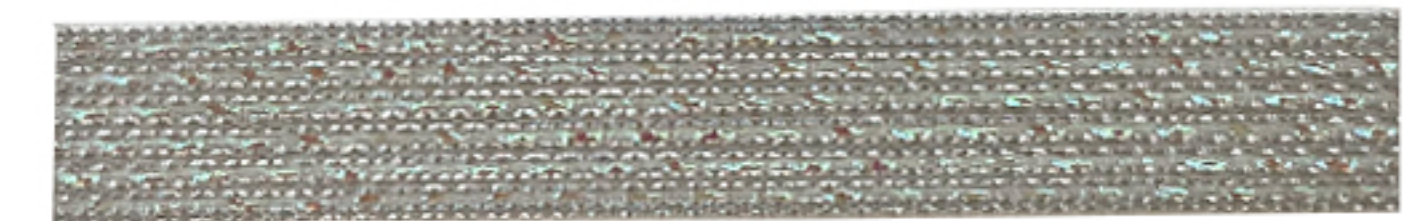
DI-27252



DI-27253



DI-27254



DI-27255



# Advanced Construction Webbing

Webbing ranges from clean solid constructions to refined mono and metallic blends.

Monofilament, metallic, iridescent or rainbow yarns create subtle sheen or bold contrast, with flat and raised textures across multiple widths for added depth and character.

NO	Material No.	Price	UNIT	Composition	Width (mm)
1	DI-27256		M	80% Recycled Polyester, 20% Monofilament (Polyester)	10
2	DI-27257		M	70% Monofilament (Polyester), 30% Metallic yarn	12
3	DI-27258		M	10% Recycled Polyester, 60% Monofilament (Polyester), 30% Radiant yarn	14
4	DI-27259		M	100% Recycled Polyester	14
5	DI-27260		M	100% Recycled Polyester	15
6	DI-27261		M	70% Recycled Polyester, 30% Radiant yarn	13
7	DI-27262		M	70% Recycled Polyester, 30% Metallic yarn	15
8	DI-27263		M	70% Recycled Polyester, 30% Metallic yarn	15

DI-27256



DI-27257



DI-27258



DI-27259



DI-27260



DI-27261



DI-27262



DI-27263



# Specialty Weave Webbing

Available in solid or bold multi-color woven patterns. Advanced constructions feature geometric designs, braided looks, ombre effects, and textured surfaces for added visual depth and character.

NO	Material No.	Price	UNIT	Composition	Width (mm)
1	DI-27264		M	100% Recycled Polyester	8
2	DI-27265		M	30% Recycled Polyester, 30% Monofilament (Polyester), 40% Feather yarn (Polyester)	10
3	DI-27266		M	100% Recycled Polyester	10
4	DI-27267		M	100% Recycled Polyester	13
5	DI-27268		M	100% Recycled Polyester	13
6	DI-27269		M	100% Recycled Polyester	15
7	DI-27270		M	100% Recycled Polyester	18
8	DI-27271		M	100% Recycled Polyester	18



# Classic Essential Laces

Reliable flat laces designed for everyday footwear.  
 Cost-efficient and versatile, available in widths from 6mm to 10mm.

NO	Material No.	Price	UNIT	Composition	Width (mm)
1	DI-27272		M x PR	80% Recycled Polyester. 20% Bright yarn(Polyester)	8
2	DI-27273		M x PR	100% Recycled Polyester	5
3	DI-27274		M x PR	100% Recycled Polyester	6
4	DI-27275		M x PR	100% Recycled Polyester	8
5	DI-27276		M x PR	80% Recycled Polyester, 20% Bright yarn (Polyester)	8
6	DI-27277		M x PR	80% Recycled Polyester, 20% Bright yarn (Polyester)	10
7	DI-27278		M x PR	100% Recycled Polyester	8
8	DI-27279		M x PR	100% Recycled Polyester	8

## Classic Essential Laces



# Metallic & Textured Laces

Add a refined touch with subtle metallic threads and elegant textures. Available in both round and flat styles for a premium look.

NO	Material No.	Price	UNIT	Composition	Width (mm)
1	DI-27280		M x PR	80% Recycled Polyester, 20% Metallic yarn	6
2	DI-27281		M x PR	80% Recycled Polyester, 20% Metallic yarn	6
3	DI-27282		M x PR	82% Recycled Polyester, 15% Monofilament (Polyester), 3% Metallic yarn	6
4	DI-27283		M x PR	80% Recycled Polyester, 20% Radiant yarn	5
5	DI-27284		M x PR	80% Recycled Polyester, 20% Radiant yarn	4
6	DI-27285		M x PR	80% Recycled Polyester, 10% Monofilament (Polyester), 10% Metallic yarn	5
7	DI-27286		M x PR	90% Recycled Polyester, 10% Monofilament (Polyester)	6
8	DI-27287		M x PR	90% Recycled Polyester, 10% Monofilament (Polyester)	5

## Metallic & Textured Laces



# Patterned & Graphic Laces

Bold checkerboard patterns and dynamic woven graphics.  
Ideal for sporty designs and trend-forward sneakers.

NO	Material No.	Price	UNIT	Composition	Width (mm)
1	DI-27288		M x PR	53% Recycled Polyester, 47% Metallic yarn	6
2	DI-27289		M x PR	90% Recycled Polyester, 10% Radiant yarn	5
3	DI-27290		M x PR	100% Recycled Polyester	6
4	DI-27291		M x PR	100% Recycled Polyester	8
5	DI-27292		M x PR	100% Recycled Polyester	8
6	DI-27293		M x PR	100% Recycled Polyester	8
7	DI-27294		M x PR	100% Recycled Polyester	8
8	DI-27295		M x PR	100% Recycled Polyester	8

## Patterned & Graphic Laces



# Textured Fashion Laces

Bold braided constructions with dynamic texture and dimensional detail. Multi-tone patterns, vivid contrasts, and layered color effects create a strong, fashion-forward statement.

NO	Material No.	Price	UNIT	Composition	Width (mm)
1	DI-27296		M x PR	100% Recycled Polyester	6
2	DI-27297		M x PR	100% Recycled Polyester	6
3	DI-27298		M x PR	85% Recycled Polyester, 15% Metallic yarn	5
4	DI-27299		M x PR	100% Recycled Polyester	6
5	DI-27300		M x PR	100% Recycled Polyester	6
6	DI-27301		M x PR	100% Recycled Polyester	8
7	DI-27302		M x PR	95% Recycled Polyester, 5% Monofilament (Polyester)	6
8	DI-27303		M x PR	100% Recycled Polyester	8

## Textured Fashion Laces



# Braided Vintage Laces

Braided textures with a warm, vintage feel.  
Available in 5mm to 9mm widths to add depth and character to casual footwear.

NO	Material No.	Price	UNIT	Composition	Width (mm)
1	DI-27304		M x PR	70% Recycled Polyester, 30% Monofilament (Polyester)	5
2	DI-27305		M x PR	80% Recycled Polyester, 20% Monofilament (Polyester)	5
3	DI-27306		M x PR	100% Recycled Polyester	5
4	DI-27307		M x PR	100% Recycled Polyester	6
5	DI-27308		M x PR	100% Recycled Polyester	5
6	DI-27309		M x PR	85% Recycled Polyester, 10% Monofilament (Polyester), 5% Metallic yarn	8
7	DI-27310		M x PR	100% Recycled Polyester	7
8	DI-27311		M x PR	100% Recycled Polyester	8

## Braided Vintage Laces



# Essential & Glossy Laces

Premium polyester laces with glossy finish and clean texture, suitable for lifestyle and sports footwear.

NO	Material No.	Price	UNIT	Composition	Width (mm)
1	DI-27312		M x PR	100% Recycled Polyester	8
2	DI-27313		M x PR	100% Recycled Polyester	10
3	DI-27314		M x PR	65% Recycled Polyester, 35% Bright yarn (Polyester)	8
4	DI-27315		M x PR	65% Recycled Polyester, 35% Bright yarn (Polyester)	4
5	DI-27316		M x PR	85% Recycled Polyester, 15% Bright yarn (Polyester)	6
6	DI-27317		M x PR	30% Recycled Polyester, 70% Bright yarn (Polyester)	12
7	DI-27318		M x PR	50% Recycled Polyester, 50% Bright yarn (Polyester)	8
8	DI-27319		M x PR	80% Recycled Polyester, 20% Bright yarn (Polyester)	8

## Essential & Glossy Laces

DI-27312



DI-27313



DI-27314



DI-27315



DI-27316



DI-27317



DI-27318



DI-27319



# Gradient Pattern Laces & Webbing tape

Engineered gradient shoelaces designed to prevent color bleeding. Durable construction with vibrant color transitions.

NO	Material No.	Price	UNIT	Composition	Width (mm)
1	DI-27320		M x PR	30% Recycled Polyester, 70% Feather yarn (Polyester)	6
2	DI-27321		M x PR	40% Recycled Polyester, 60% Feather yarn (Polyester)	5
3	DI-27322		M x PR	100% Recycled Polyester	4
4	DI-27323		M x PR	100% Recycled Polyester	8
5	DI-27324		M x PR	100% Recycled Polyester	8
6	DI-27325		M x PR	100% Recycled Polyester	8
7	DI-27326		M x PR	100% Recycled Polyester	10
8	DI-27327		M	100% Recycled Polyester	10

## Gradient Pattern Laces & Webbing tape

